

# Atlanta New Stadium Project



GWCCA Update 12/2/2014



# Atlanta New Stadium Project

## Facts

<i>Subcontractors</i>	<b>65+</b>
<i>Avg. Daily Manpower</i>	<b>400</b>
<i>Peak Daily Manpower</i>	<b>2,000 (Late 2015)</b>
<i>% Overall Construction Complete</i>	<b>9%</b>
<i>% Foundations Complete</i>	<b>95%</b>
<i>% Concrete Columns/Slabs</i>	<b>15%</b>

# Atlanta New Stadium Project

## Fun Facts

Auger Cast Piles 115,000 lf 64.75 One World Trade Centers

Drilled Pier Concrete 6,091 cy 641 Concrete trucks (3.64 mi)

Rock Sockets 1,215 lf 1.5 x Height of Stone Mountain

Concrete Structure 115,000 cy Concrete trucks (68 mi)

Reinforcing Steel 19,000+ tons 1,266 Marta buses @ 15 tons ea

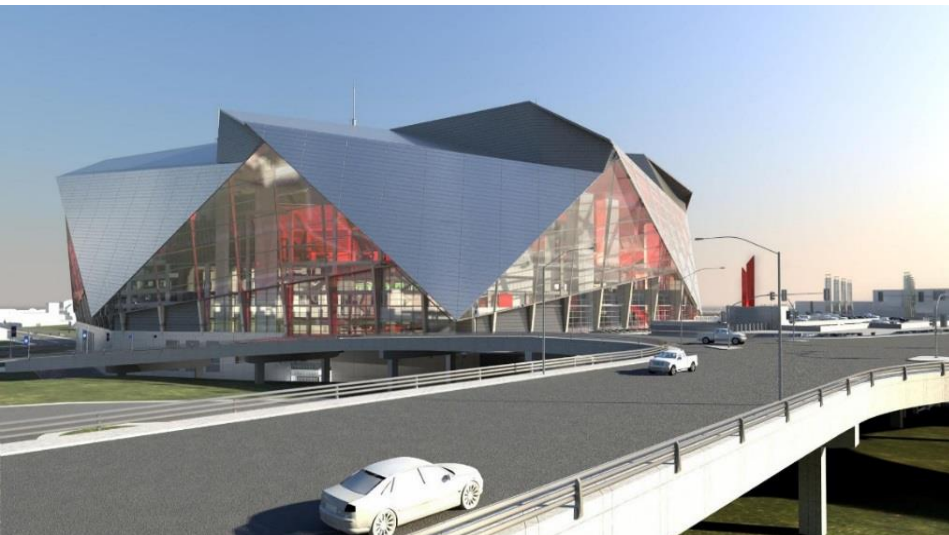
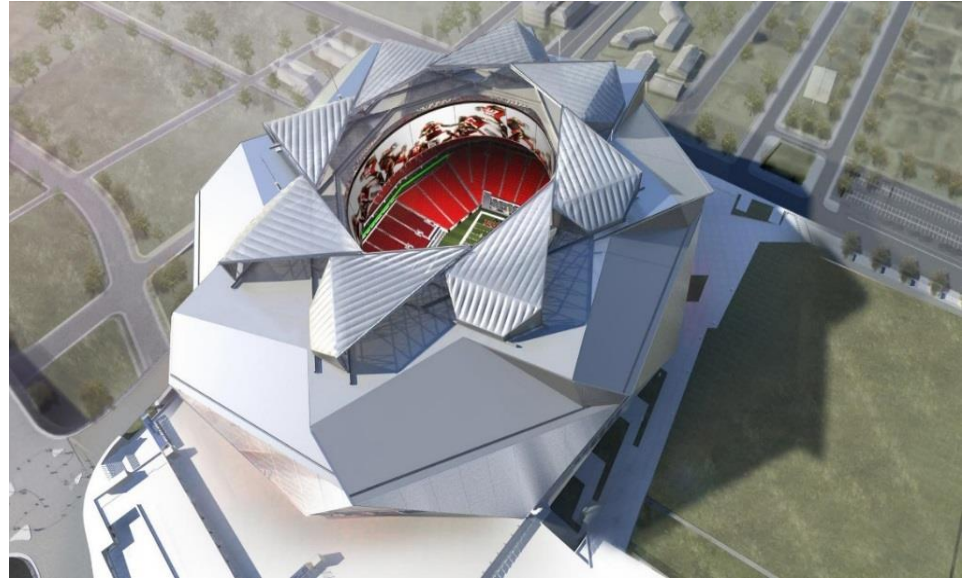
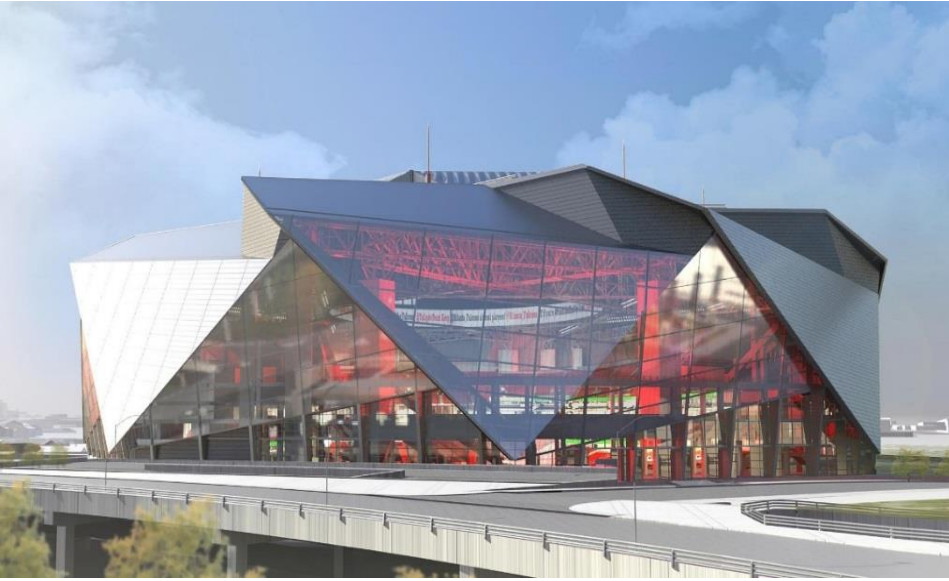
Roof Area 631,620 sf 14.5 Acres

Roof/Façade Steel 18,834 tons 2 Aircraft Carriers

Electrical Wiring 8.1 million lf 1,534 mi (Dallas to NY)

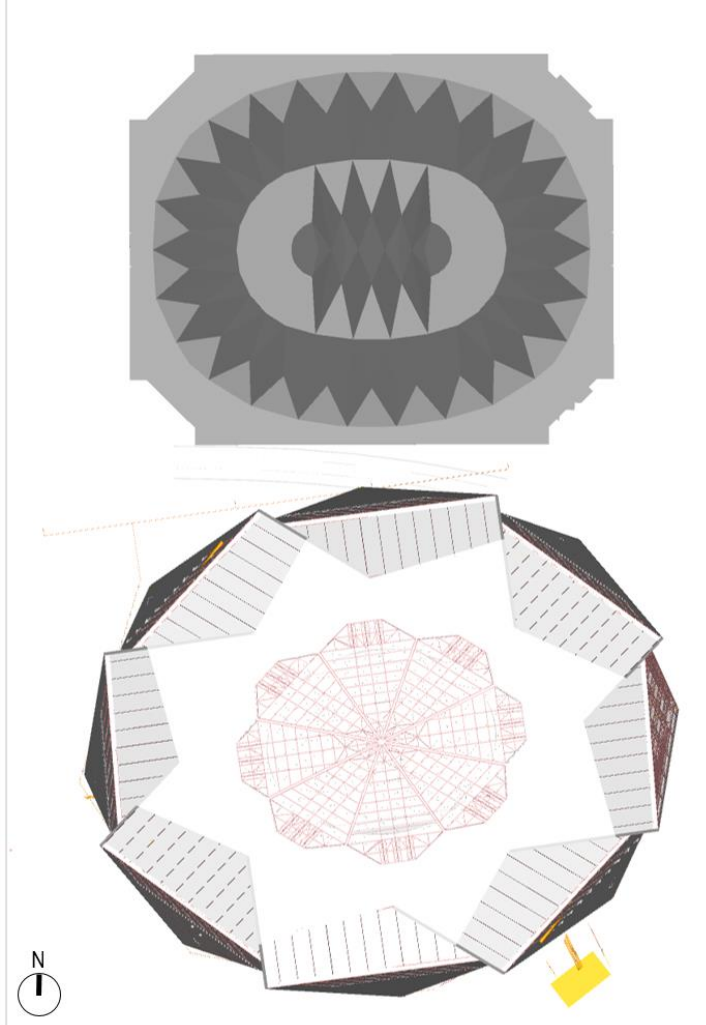


# Atlanta New Stadium Project

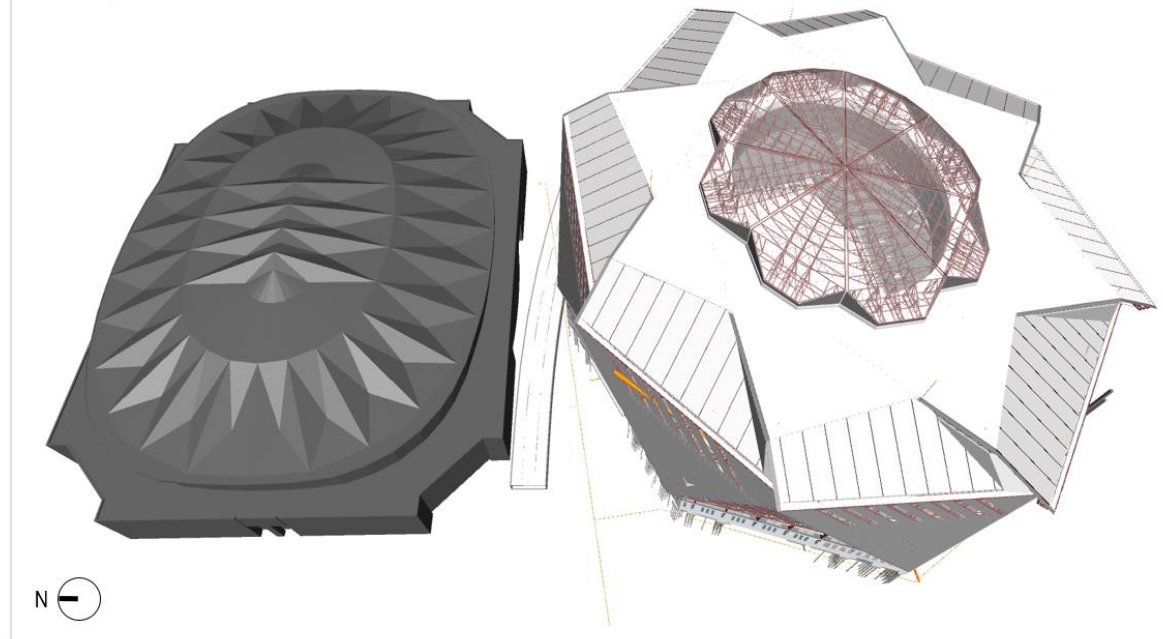


## Georgia Dome vs. New Stadium Project

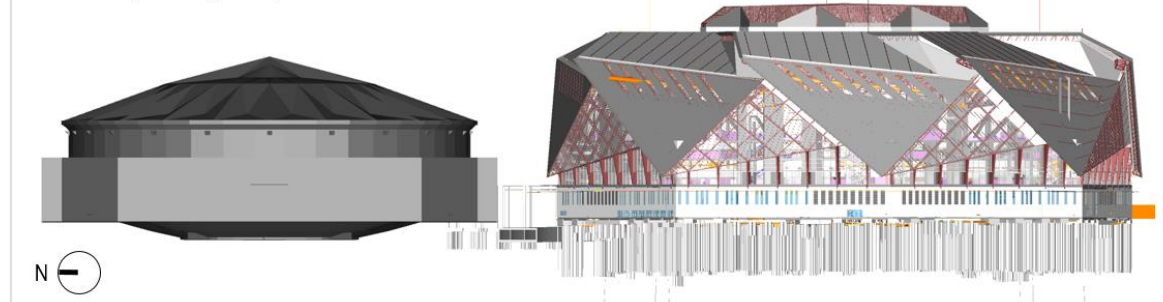
Plan View



Bird's Eye View



Elevation (Looking East)





# Atlanta New Stadium Project



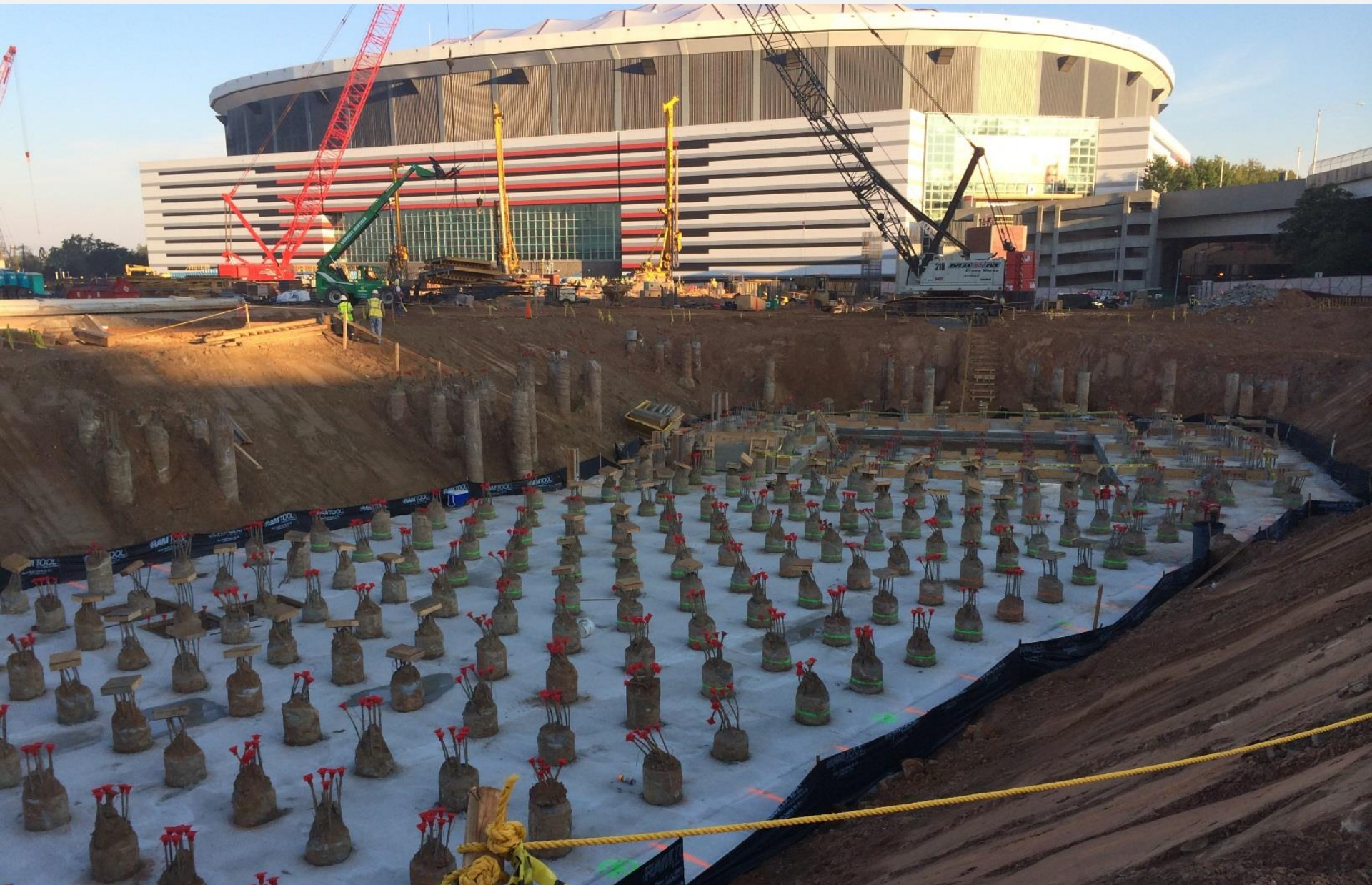


# Atlanta New Stadium Project





# Atlanta New Stadium Project





# Atlanta New Stadium Project





# Atlanta New Stadium Project



## Megacolumn Caps



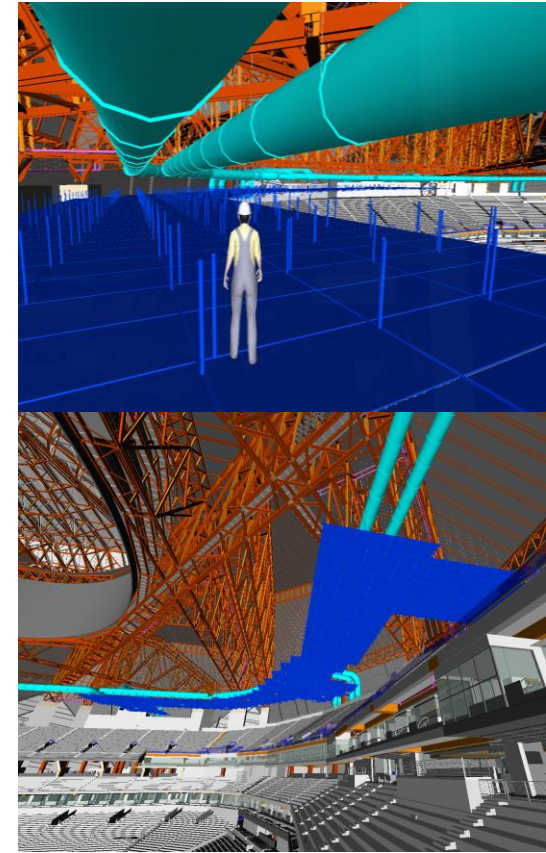
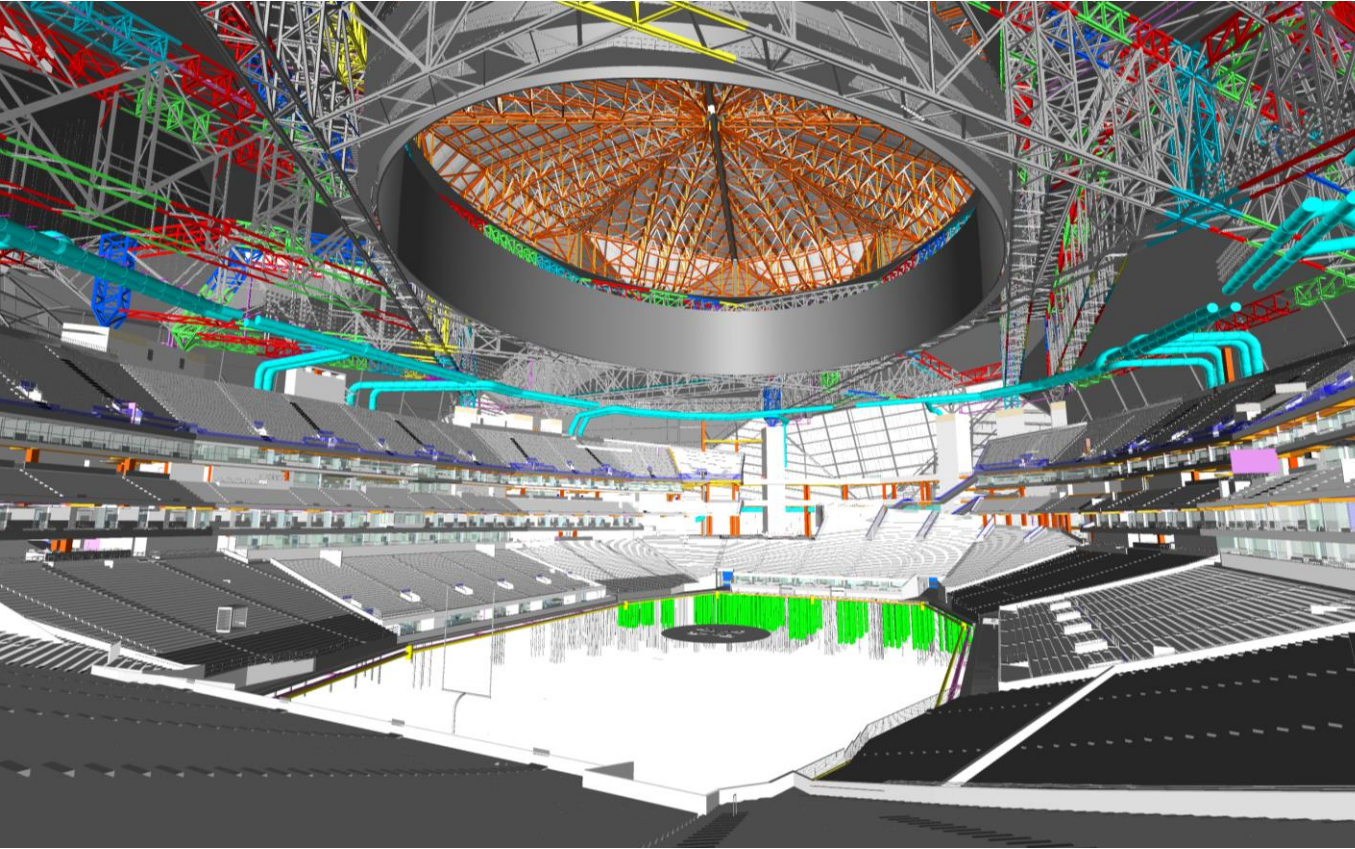


Megacolumns





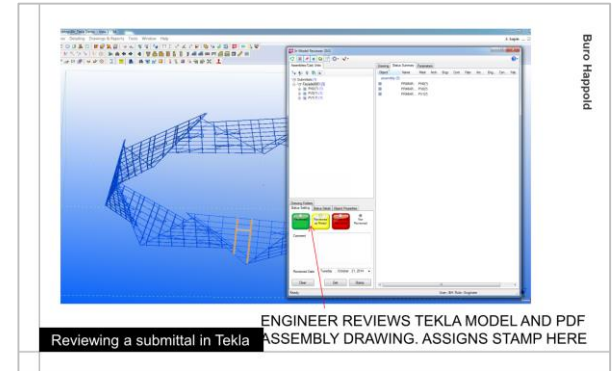
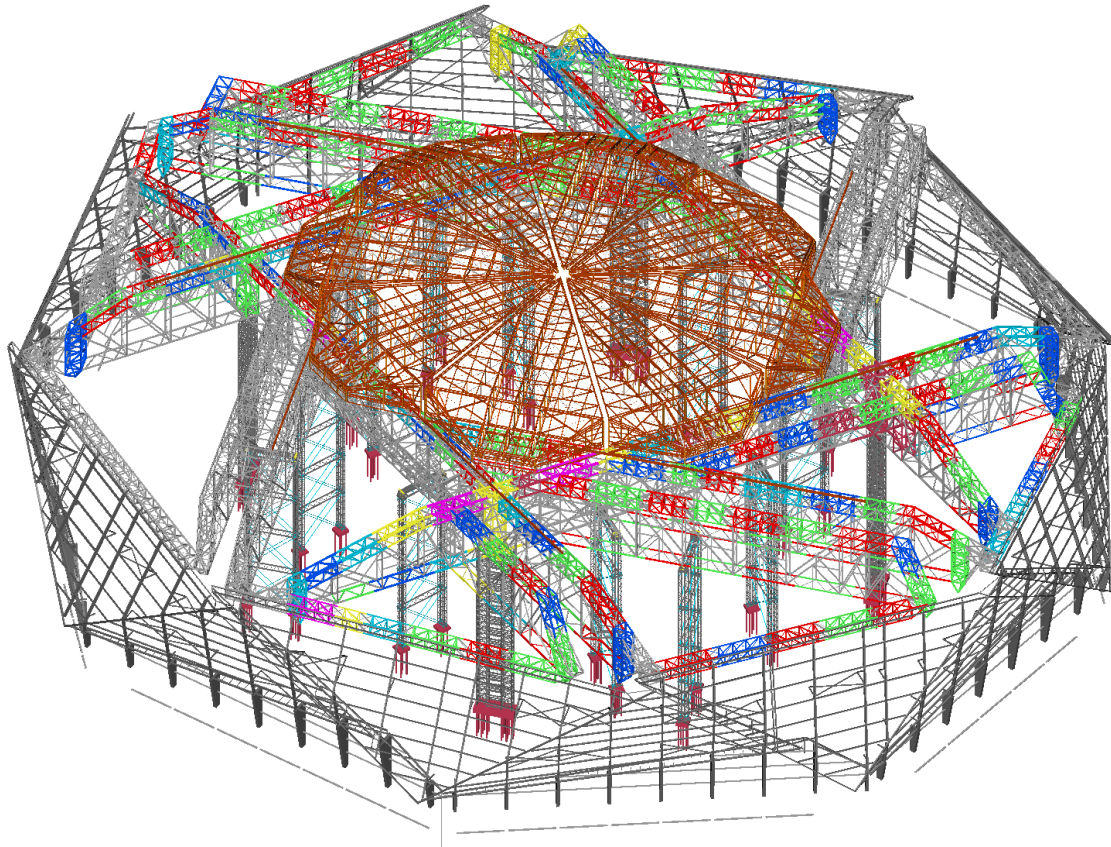
Safety



Trade Contractor Ring Duct Installation Work Platform Digital Model : Safety / Estimating



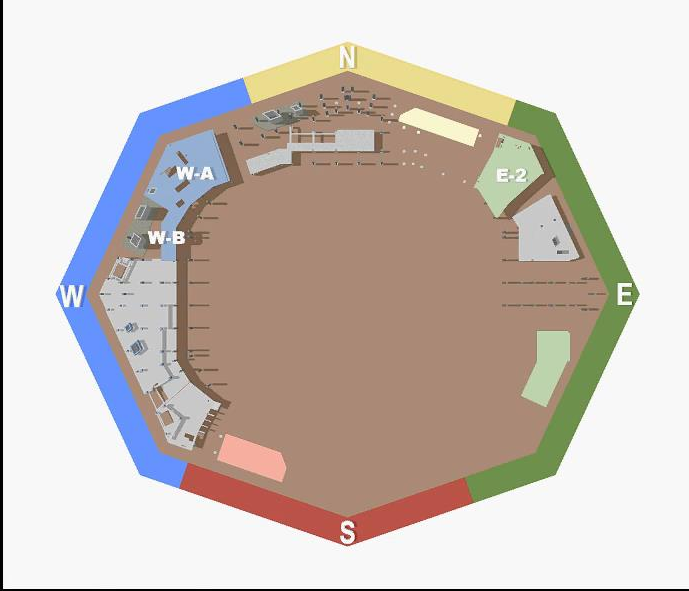
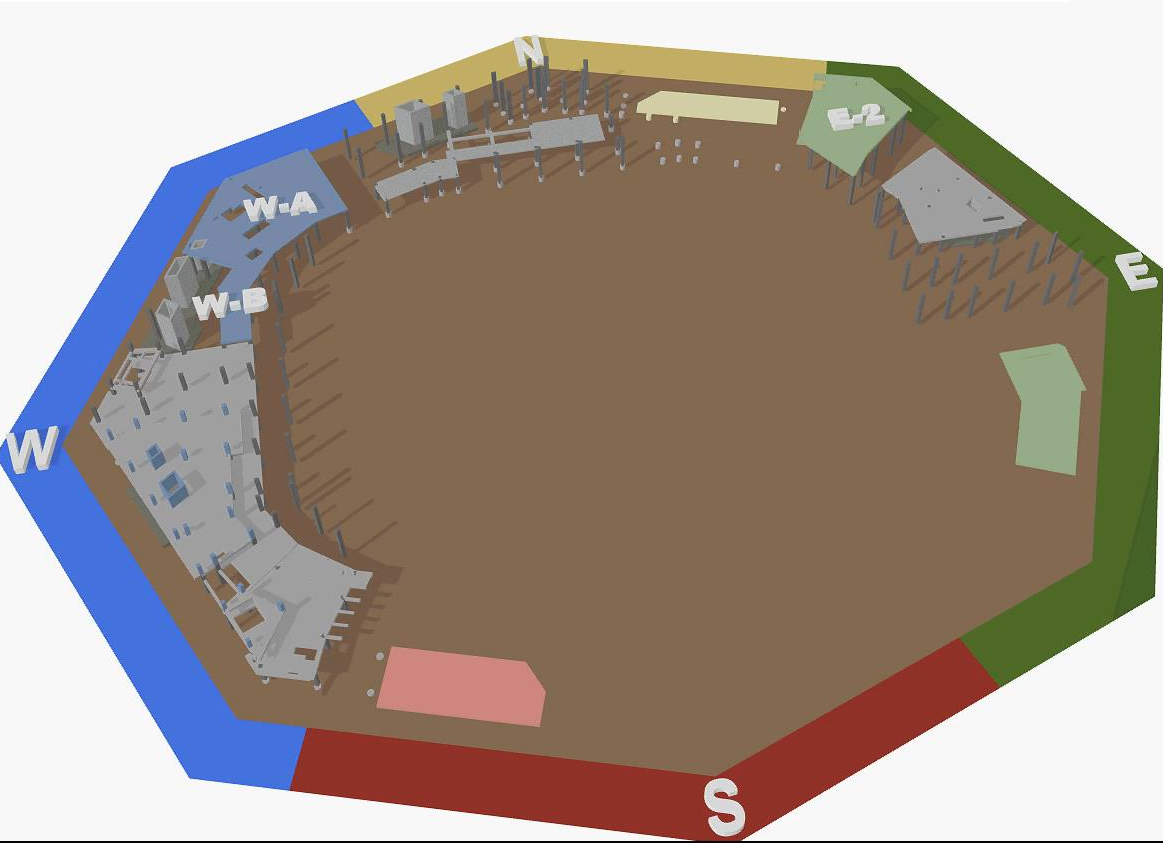
### 3D Structural Steel Shop Drawing Review



ENGINEER REVIEWS TEKLA MODEL AND PDF ASSEMBLY DRAWING. ASSIGNS STAMP HERE

Buro Happold

## 4D Structure Construction Sequence



Oct	Nov	Dec	Jan 2015	Feb	Mar	Apr	May	Jun	Jul	Aug	Sep	Oct	Nov	Dec	Jan 2016	Feb	Mar	Apr
wk 40	wk 45	wk 49	wk 54	wk 58	wk 62	wk 66	wk 71	wk 75	wk 79	wk 84	wk 88	wk 93	wk 97	wk 101	wk 106	wk 110	wk 114	wk 119



## Operable Roof Animation

